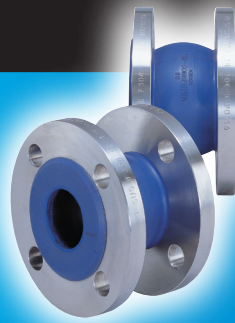


Flexible rubber joint For boosting water supply

BF-CONNECTOR

Flexible rubber joint with pursuing the concept reliability.



JWWA
Registered item



SK-10
ECO-Products

Compliance With the Specification of Ministry of Land, Infrastructure, Transport and Tourism.

Listed Under the Specification of Japan Water Works Association (JWWA)

Feature

For primary side of water supply

Using JWWA's compliance rubber, can be used for service water and drinking water.

Space saving

The closest interface distance as per customer's needs.

Strong bending fatigue

Excellent durability for repeated displacement and pressure fluctuation.

Nature Friendly

BF connector has succeeded in reducing 80% of CO2 emissions compared with the past rubber material when it is combusting.

Excellent deterioration resistance

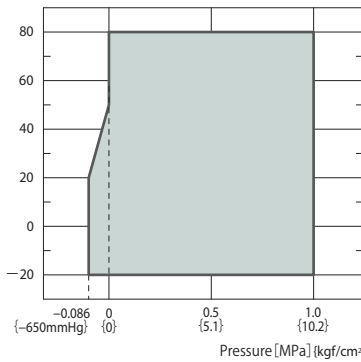
Excellent deterioration resistance against chlorine, ozone and sunlight.

Excellent durability

Passed reciprocating pressure test for 200,000 cycles.

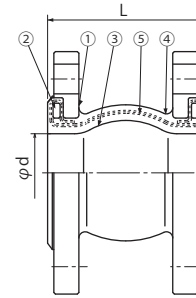
Operation range (pressure, temperature)

Temperature [°C]



- Please use within the operation range of maximum operation pressure and maximum service temperature.

Structure



NO.	Name	Material	NO.	Name	Material
①	Flange	SUS304	④	Outer rubber	EPDM (SK10)
②	Reinforcing ring	SS400	⑤	Reinforcing cord	Aramid fiber
③	Inner rubber	EPDM (SK10)			

Flange compatible dimension	Standard	J I S 1 0 K
	Change OK	<input type="checkbox"/> J I S 5 K <input type="checkbox"/> Potable water <input type="checkbox"/> J I S 2 0 K <input type="checkbox"/> A N S I
Material	Standard	S U S 3 0 4
	Change OK	<input type="checkbox"/> S S 4 0 0 <input type="checkbox"/> F C D <input type="checkbox"/> S U S 3 1 6 <input type="checkbox"/> Polyvinyl chloride

Dimension and allowable displacement

Nominal diameter	Main body dimension (mm)		Mass (kg)	Allowable displacement (mm)				取付時寸法許容値 (mm)			
	L	φd		Lateral displacement	伸び	縮み	偏角 (°)	偏心	伸び	縮み	偏角 (°)
25	100	25	2.3	10	10	10	5	4	3	3	2
32	100	32	3.0	10	10	10	5	4	3	3	2
40	100	40	3.1	10	10	10	5	4	3	3	2
50	100	50	3.9	10	10	10	5	4	3	3	2
65	110	65	5.3	10	10	10	5	4	3	3	2
80	110	75	5.4	10	10	10	5	4	3	3	2
100	110	100	6.1	10	10	10	5	4	3	3	2

- Please use within allowable displacement range.
- The installation allowance is included in the allowable displacement.
(allowable displacement = installation displacement + operation displacement)
- For correction method, refer to "Attention for handling" or "TOZEN HP"

This brochure may be revised without prior notice. We apologize in advance for any inconvenience this may cause.

Agent

TOZEN Corporation

8-4, Asahi, Yoshikawa
Saitama 342-0008 Japan

